

These 2 composition support licenses for VIEW Pro Encoders and Decoders enable dynamic zone composition to be sent to multiple streams/zones, or allows multiple streams to be composed for a single display, including multi-display video walls.

Obtaining a one time license per unit provides for the most cost-effective use of your encoders and decoders.



Applications

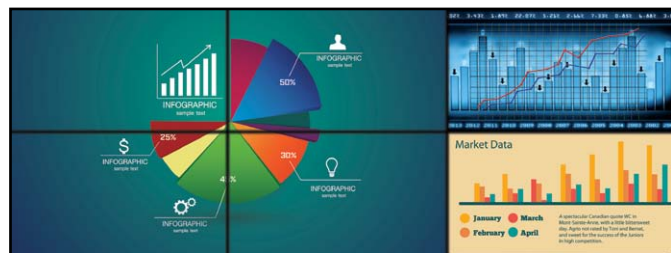
- + Command and control displays
- + Video walls
- + Multi-imaging
- + Advanced digital signage
- + Sports multi-views
- + Distance learning
- + Classrooms

Features

- + Works with all licensed VIEW Pro Encoders and Decoders
- + Combine multiple source images for single display output
- + Combine different source types or formats into single display output
- + Maintain aspect ratio or crop image
- + Display portion of video for multi-displays or video wall applications



VIEW Pro Composition "Quad" configuration (1 display)



VIEW Pro 2x3 Video Wall Composition (6 displays)



VIEW Pro Composition "Six (5+1)" configuration (1 display)



VIEW Pro 2x2 Video Wall Composition (4 displays)

Functional Specifications

MAXIMUM RESOLUTION
1920x1200

FRAME RATES
24, 30, 60

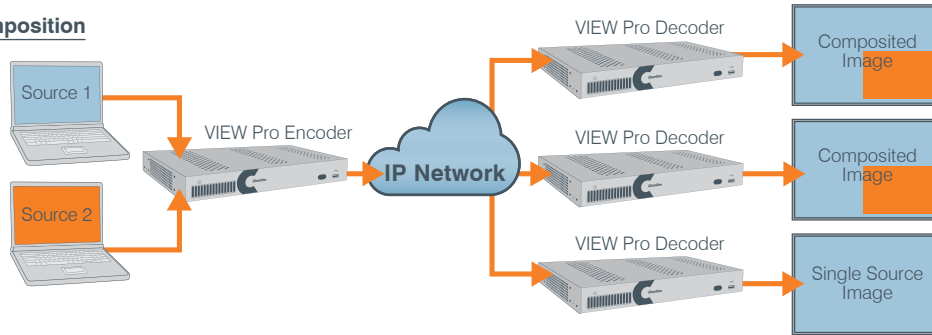
PANORAMA LICENSE FOR ENCODER
910-0000-004

PANORAMA LICENSE FOR DECODER
910-0001-004

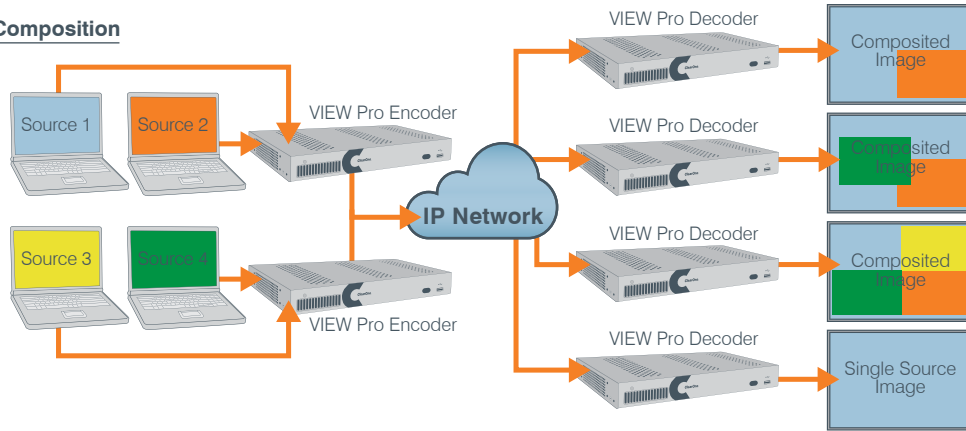
OTHER RELATED PRODUCTS
VIEW Pro Encoder E210 910-0000-001
VIEW Pro Decoder D110 910-0001-001
VIEW Pro Decoder D210 910-0003-001

VIEW Pro Composition/Video Wall License - Diagrams

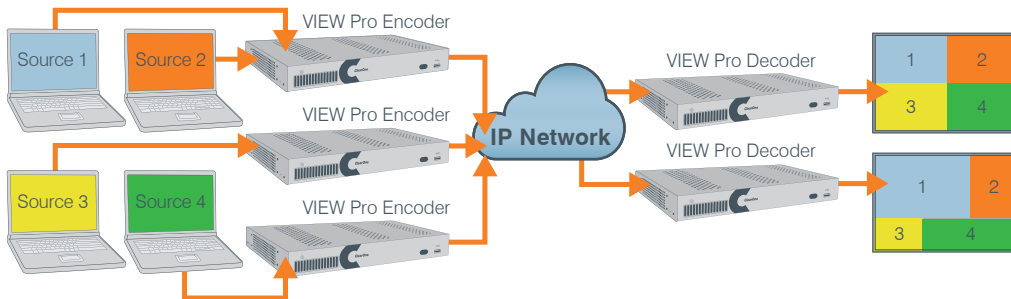
Encoder Composition



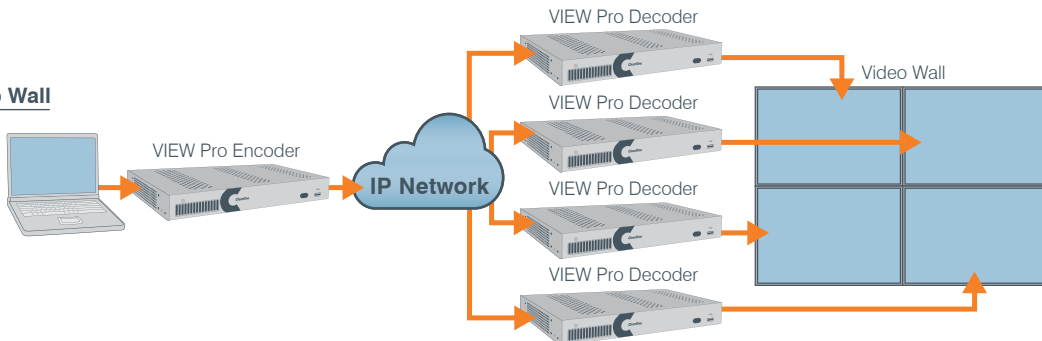
Decoder Composition



Combined Composition



Video Wall



Clearone Contacts

North America
 Tel: +801.975.7200
 Toll Free: +800.945.7730
 Sales: +800.707.6994
 Fax: +801.303.5711
 sales@clearone.com

Europe & Oceania
 Tel: +44.1454.616.977
 global@clearone.com

Asia Pacific
 Tel: +852.3590.4526
 global@clearone.com

Latin America
 Tel: +1.801.974.3621
 global@clearone.com

Middle East
 Tel: +852.3590.4526
 global@clearone.com